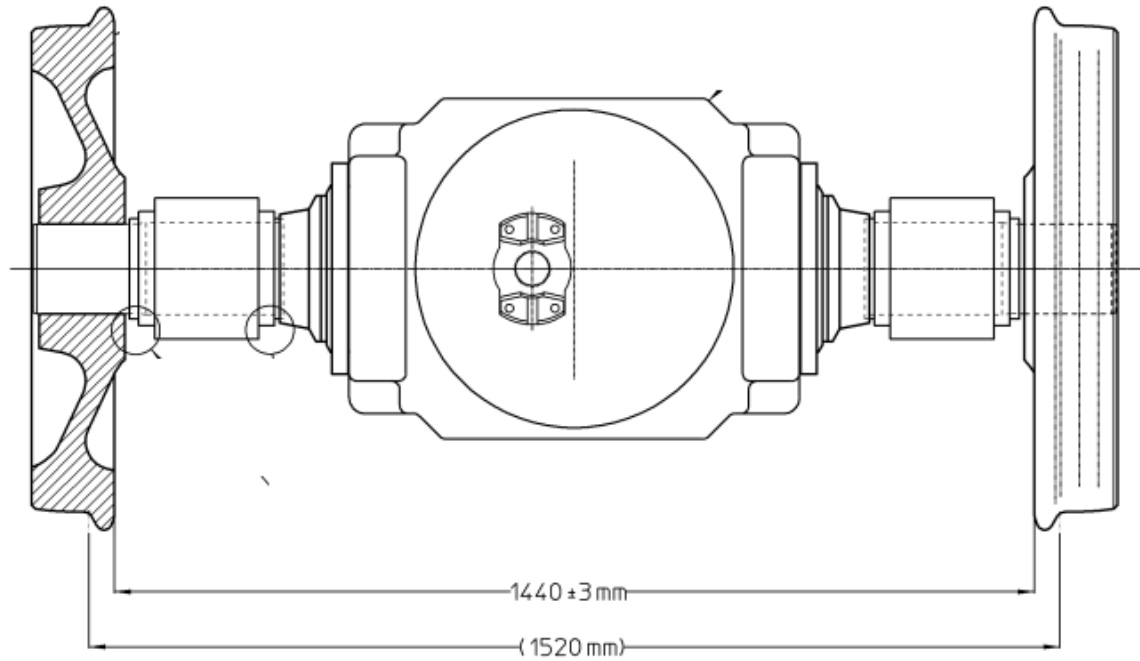


0-2201030-0-45

NO	ER	DESCRIPTION	ZONE	DR	CK	APP	MF
1		NEW RELEASE		TAF	HW	AML	



SCALE: 6

FIG NO.	ITEM NO.	PART NUMBER	DESCRIPTION AND MATERIAL SIZE (REF.ONLY)	QTY
	2	X766874-01-007	WHEEL MACHINING	2
	1	B5425XAN	AXLE & BEARING ASSY	1

IMPLIED TOLERANCES									
ALL DIMENSIONS ARE IN INCHES-TOLERANCE UNLESS OTHERWISE SPECIFIED									
NOMINAL SIZE RANGE		PLUS OR MINUS			NOMINAL SIZE RANGE		PLUS OR MINUS		
OVER	TO	FRACTION	2 PLACE DECIMAL	3 PLACE DECIMAL	OVER	TO	FRACTION	2 PLACE DECIMAL	3 PLACE DECIMAL
-	1	1/64	.01	.003	6	24	3/64	.03	.008
1	6	1/32	.02	.005	24	-	1/16	.05	.010

ANGULAR DIMENSIONS PLUS OR MINUS 1 DEGREE
 ALL MACHINED SURFACES TO HAVE A SURFACE FINISH OF 125 MICRONS UNLESS OTHERWISE SPECIFIED.

WELDING SPECIFICATION
 UNLESS OTHERWISE SPECIFIED ALL WELDS SHOULD ADHERE TO FAIRMONT TAMPER WELDING SPECIFICATION NO. 101

WEIGHT 3/8 ANGLE PROJECTION

DO NOT SCALE

DESCRIPTION 024			
WHEEL & AXLE ASSY			
DRAWN	DATE	MACHINE TYPE	
TAF	23 NOV 98	MARK VI, 1520MM	
CHECKED	DATE		
HW	9 DEC 98		
APP-ENG	DATE		
AML	4 DEC 98		
APP-PRG	DATE		
LAST ECR.	CHECKED	ENG.DWG.	
11186	HW		
.8	DATE		
	11-Dec-98		

THIS DOCUMENT CONTAINS PROPRIETARY INFORMATION AND SUCH INFORMATION MAY NOT BE DISCLOSED TO OTHERS FOR ANY PURPOSE OR USED FOR MANUFACTURING PURPOSES WITHOUT THE WRITTEN PERMISSION OF FAIRMONT TAMPER.

Fairmont Tamper
 2401 Edmund Road-Box 20
 Cayce-West Columbia,
 South Carolina 29171-0020
 8031 822-9160

0-2201030-0-45